



factory outlet
mon-fri 09-17
sat 10-17
sun 14-17

bsweden

belysningsbolaget

Vår produktion. Svenskt hantverk.

Vi värnar om våra hantverkstraditioner.
Detta är ett sätt att arbeta med
hållbarhet och omtanke om miljön.

Samarbete sker med en rad tillverkare i
vår geografiska närhet som alla är
specialister inom sitt respektive skrå:
svarvare, träbearbetare, glasblåsare och
sadelmakare för att nämna några.

Merparten av vårt glas blåses på
Bergdalahyttan. Vi tillvaratar kunskapen i
vår närhet och den mångåriga
traditionen av glastillverkning i Småland
får leva vidare.

bsweden
belysningsbolaget



"Och, då ska man veta att det är närproducerat. Är inte det häftigt om något!"
- Knut Knutsson



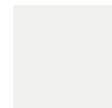


Vi har reservdelar för de flesta armaturer om något går sönder.

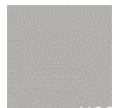
bsweden
belysningsbolaget



RAL 2012

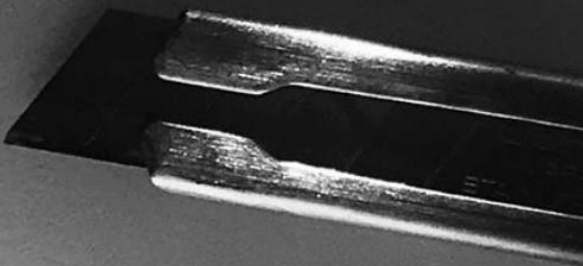


RAL 9003



NCS 2502-Y

AVS – Anna von Schewen





Vi är nominerade med

AVS,

Anna von Schewen!

BORN LASSIC

NOMINEE
2020

"AVS" lampa

Produced by

Bsweden

Designed by

Anna von Schewen

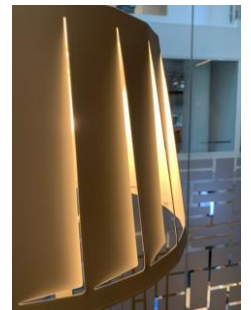
Juryns motivering:

Med ett raffinerat pappersliknande uttryck är lampan AVS en genomarbetad design som ger ett mycket behagligt ljus. Lampan kommer ha en given plats i både den moderna och den klassiska miljön.





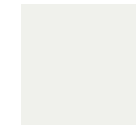
AVS – Anna von Schewen



Interface
Rosenlundsgatan
40 Stockholm



RAL 2012

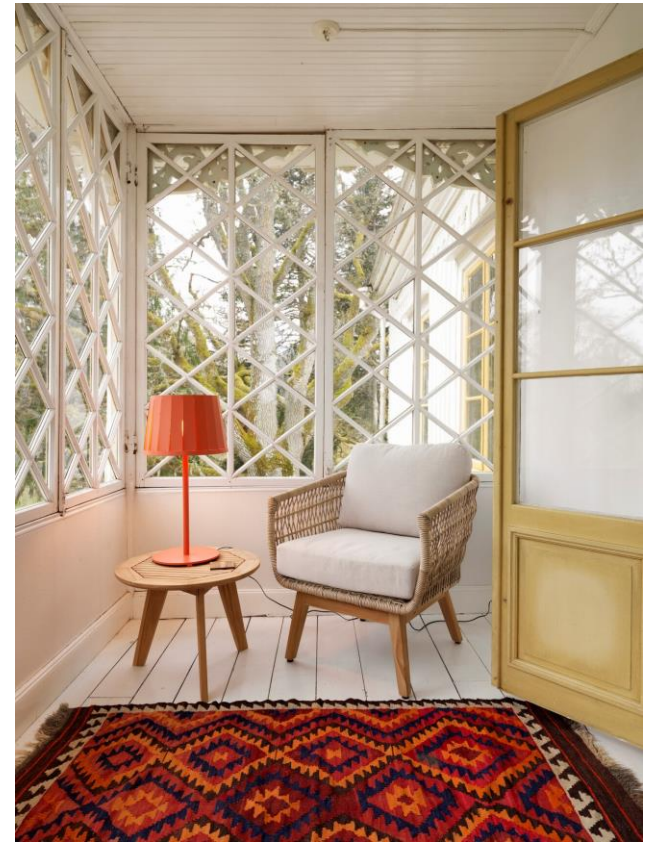


RAL 9003

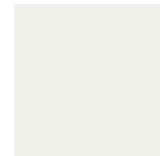


NCS 2502-Y

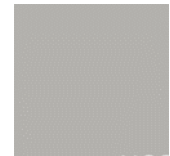
AVS – Anna von Schewen



RAL 2012



RAL 9003



NCS 2502-Y

AVS – Anna von Schewen

ELLE
DECORATION
SWEDISH
DESIGN
AWARDS
2014



CLOUD – Jonas Wagell





CLOUD – Jonas Wagell



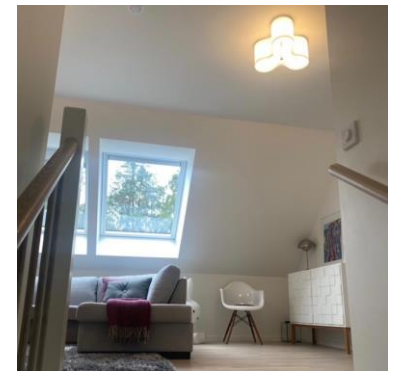
18 29 44



CLOUD – Jonas Wagell



CLOVER – Gunnel Svensson



@vikhogs

CLOVER – Gunnel Svensson



Stål

Clover 12 har klöverformad skärm i stål och är IP21 klassad och får därmed även användas i badrum.



Stål



CLOVER – Gunnel Svensson

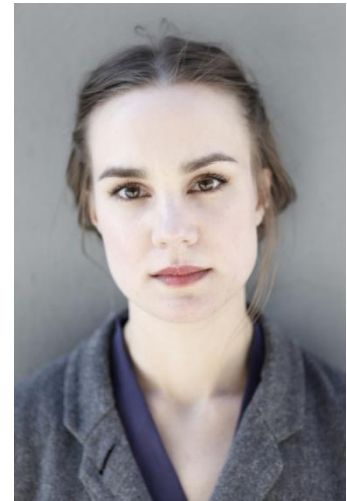


Plast





CYMBAL – Helena Svensson



CYMBAL – Helena Svensson





CYMBAL – Helena Svensson





Project: Hyllie Terrassen i Malmö.
Interior by Louise Hederström

CYMBAL – Helena Svensson



COLEFAX AND FOWLER JANE CHURCHILL MANUEL CANOVAS LARSEN



COLEFAX AND FOWLER JANE CHURCHILL MANUEL CANOVAS LARSEN



Stylist: Beatrice Rossetti Studio
CYMBAL – Helena Svensson



beatricerossettistudio



Stylist: Beatrice Rossetti Studio
CYMBAL – Helena Svensson



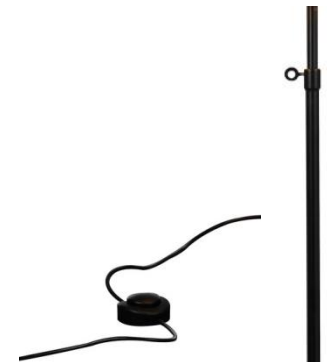
CYMBAL– Helena Svensson
Five star, Madarin Oriental Hotell Milano
Arkitekt: Antonio Cittero + Patricia Veil



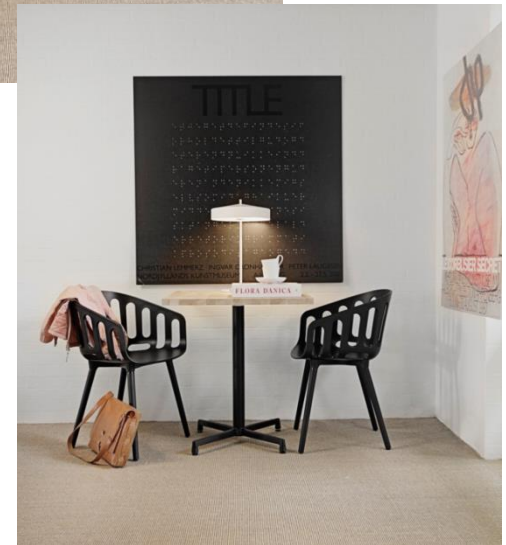
CYMBAL– Helena Svensson
Five star, Madarin Oriental Hotell Milano
Arkitekt: Antonio Cittero + Patricia Veil



CYMBAL– Helena Svensson
Five star, Madarin Oriental Hotell Milano
Arkitekt: Antonio Cittero + Patricia Veil



CYMBAL – Helena Svensson



CYMBAL – Helena Svensson

Miss Voon
Sandell Sandberg Arkitekter





CYMBAL – Helena Svensson

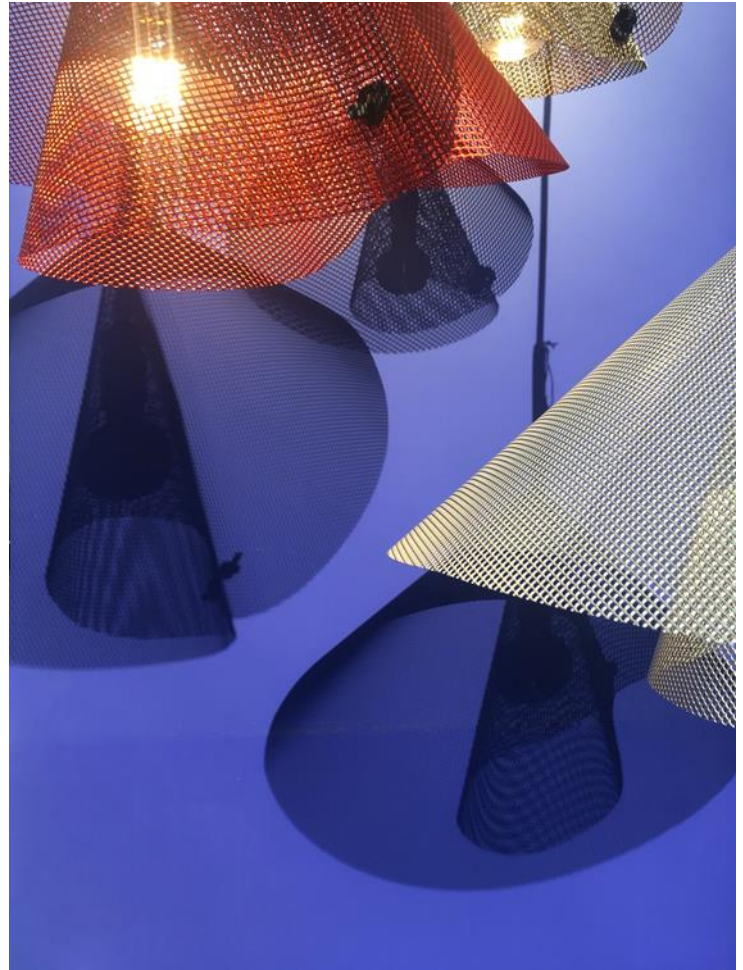


DIFFUS – Katja Pettersson

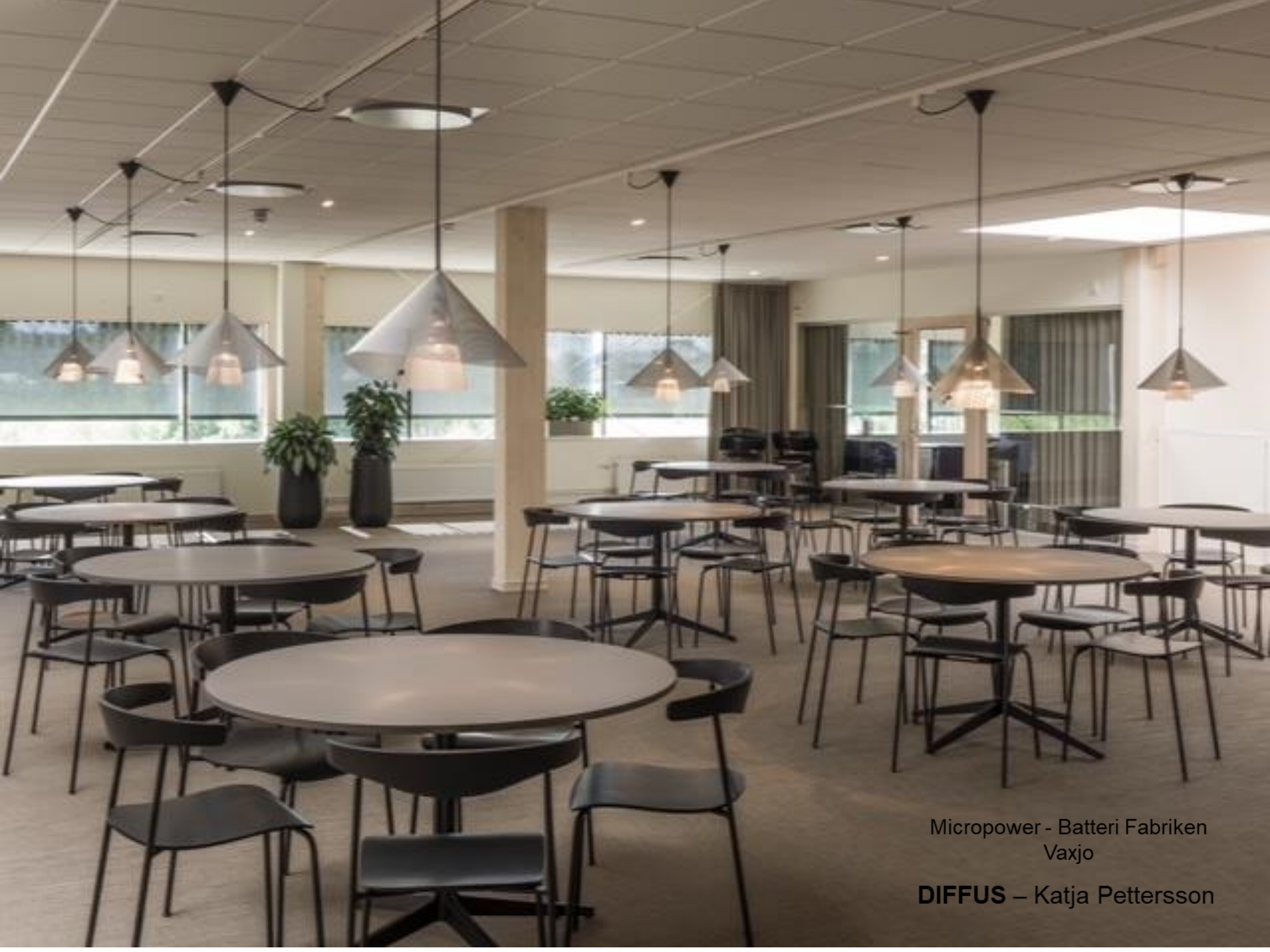


DIFFUS – Katja Pettersson





DIFFUS – Katja Pettersson

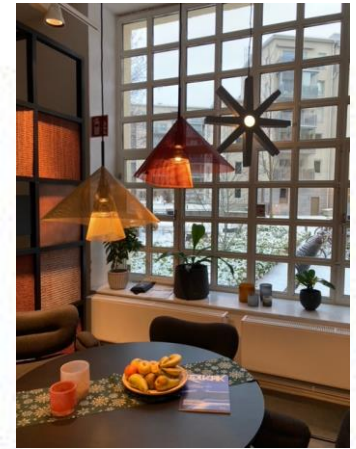


Micropower - Batteri Fabriken
Vaxjo

DIFFUS – Katja Pettersson



DIFFUS – Katja Pettersson



Kiruna Kulture och Kongress hall.
Kiruna Kulture och Kongress hall.





D:300mm och 450mm

Interior by Look Projects, Victor Ohlsson for
Happy Socks HQ Stockholm

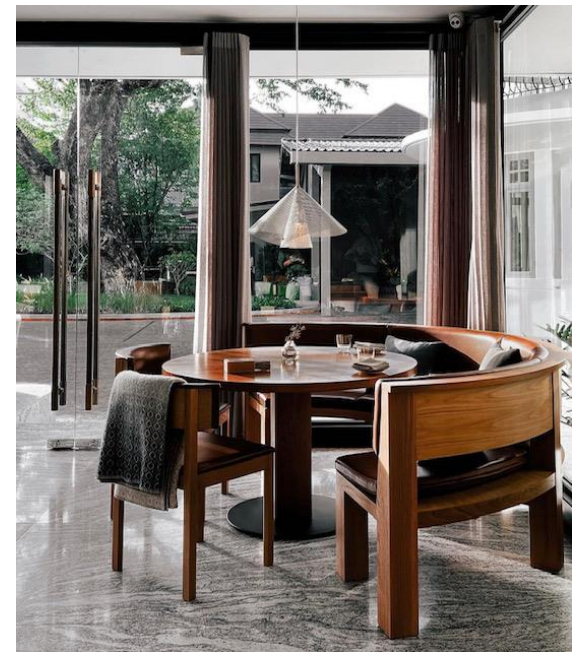
DIFFUS – Katja Pettersson



DIFFUS – Katja Pettersson



Villa Frantzén Bangkok.
Inredning: Joyn Studio
Stockholm.



DIFFUS – Katja Pettersson



Villa Frantzén Bangkok.
Inredning: Joyn Studio
Stockholm.

DIFFUS – Katja Pettersson

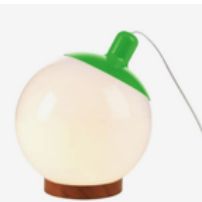
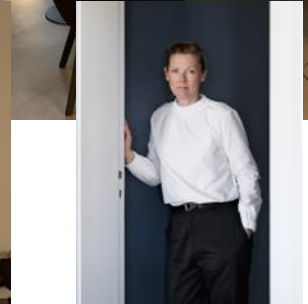
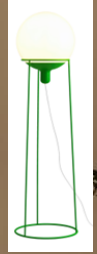
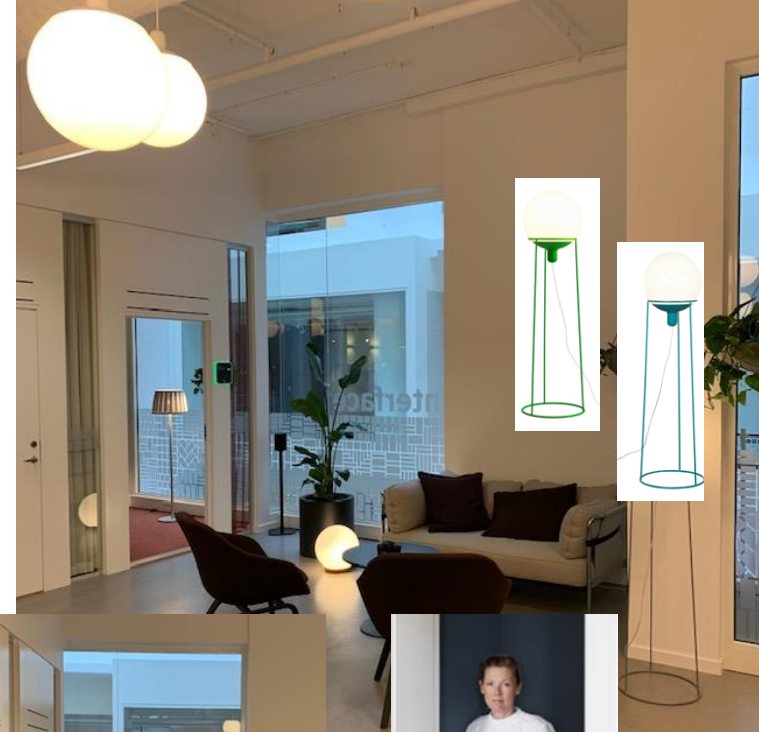


Villa Frantzén Bangkok.
Inredning: Joyn Studio
Stockholm.

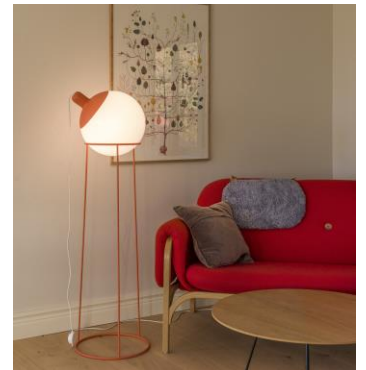
DIFFUS – Katja Pettersson

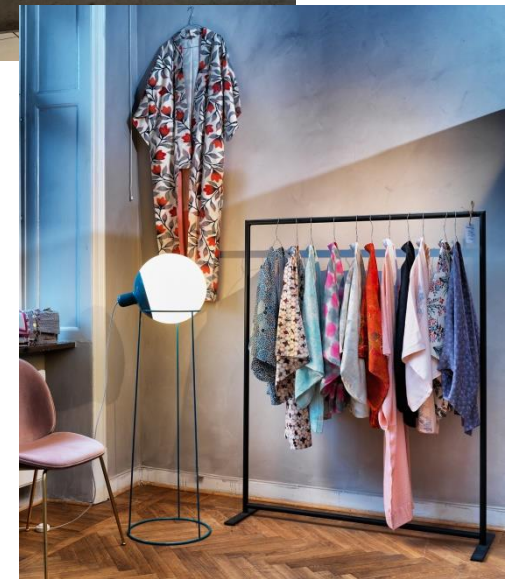


Villa Frantzén Bangkok. Inredning: Joyn Studio Stockholm.



- Louise Hederström





DOLLY - Louise Hederström



DOLLY - Louise Hederström



DOLLY - Louise Hederström



Egg - Gunnel Svensson

Nutek Lysande Vacker Dag 1995



Nutek Lysande Vacker Dag 1995

EGG – Gunnel Svensson



Elevationvinkel

ELLA - Olle Anderson



FLING – David Taylor



FLING – David Taylor



FLING – David Taylor



FLING – David Taylor



GLADYS – Louise Hederström





GLADYS – Louise Hederström



GLADYS – Louise Hederström



Elle Interior Design Award 2014

GLASGOW – David Taylor



Julius – Jerker Andersson

Utmarkt Svensk Form 1996





KON – Dan Ihreborn



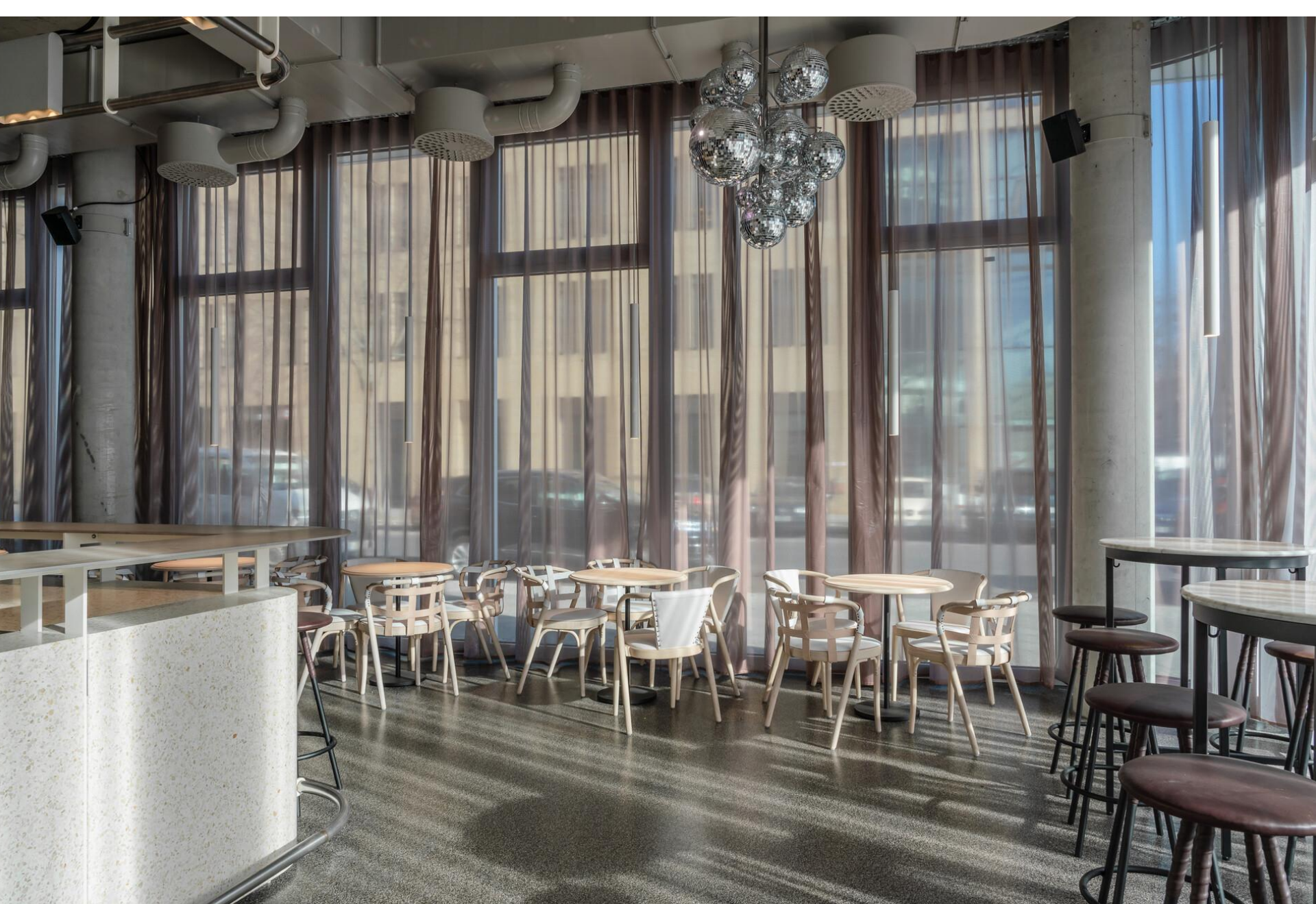
KONFETTI – Front



Sony Music Berlin

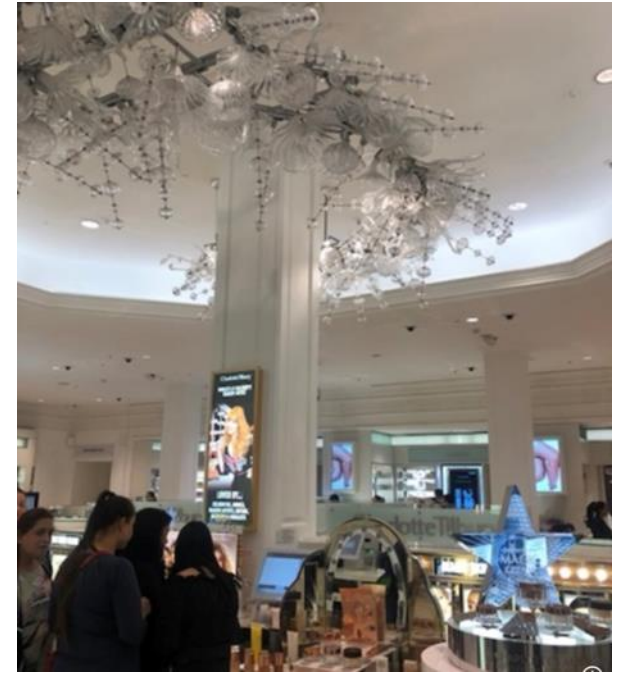
Inredare: Studio Karhard
German Design Award 2022/
Excellent Architecture/
Category: Interior Architecture

KONFETTI – Front



Sony Music Berlin

Konfetti - Front



Harrods – London



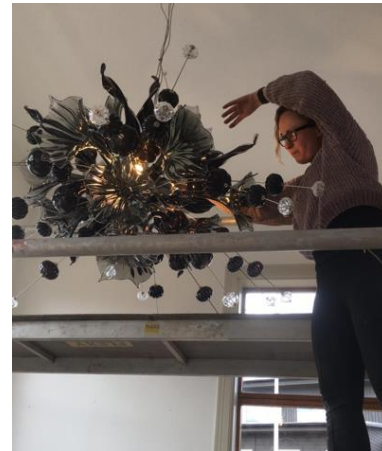
KUMULUS – Peter Nilsson



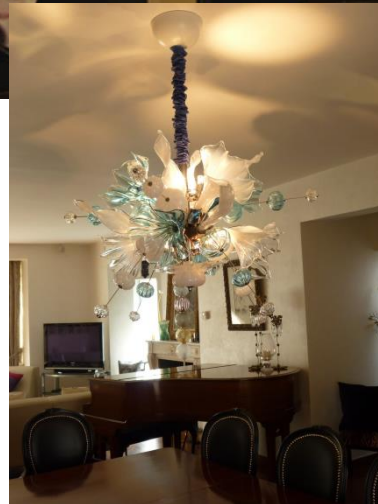
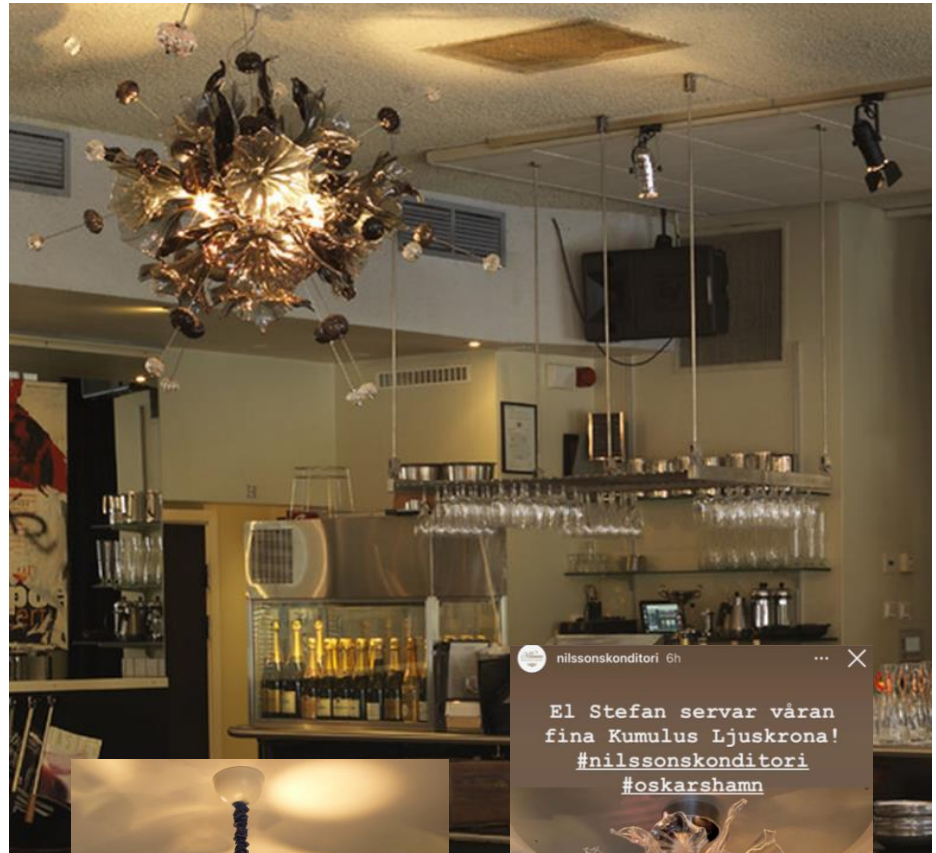
KUMULUS – Peter Nilsson



KUMULUS – Peter Nilsson



KUMULUS – Peter Nilsson



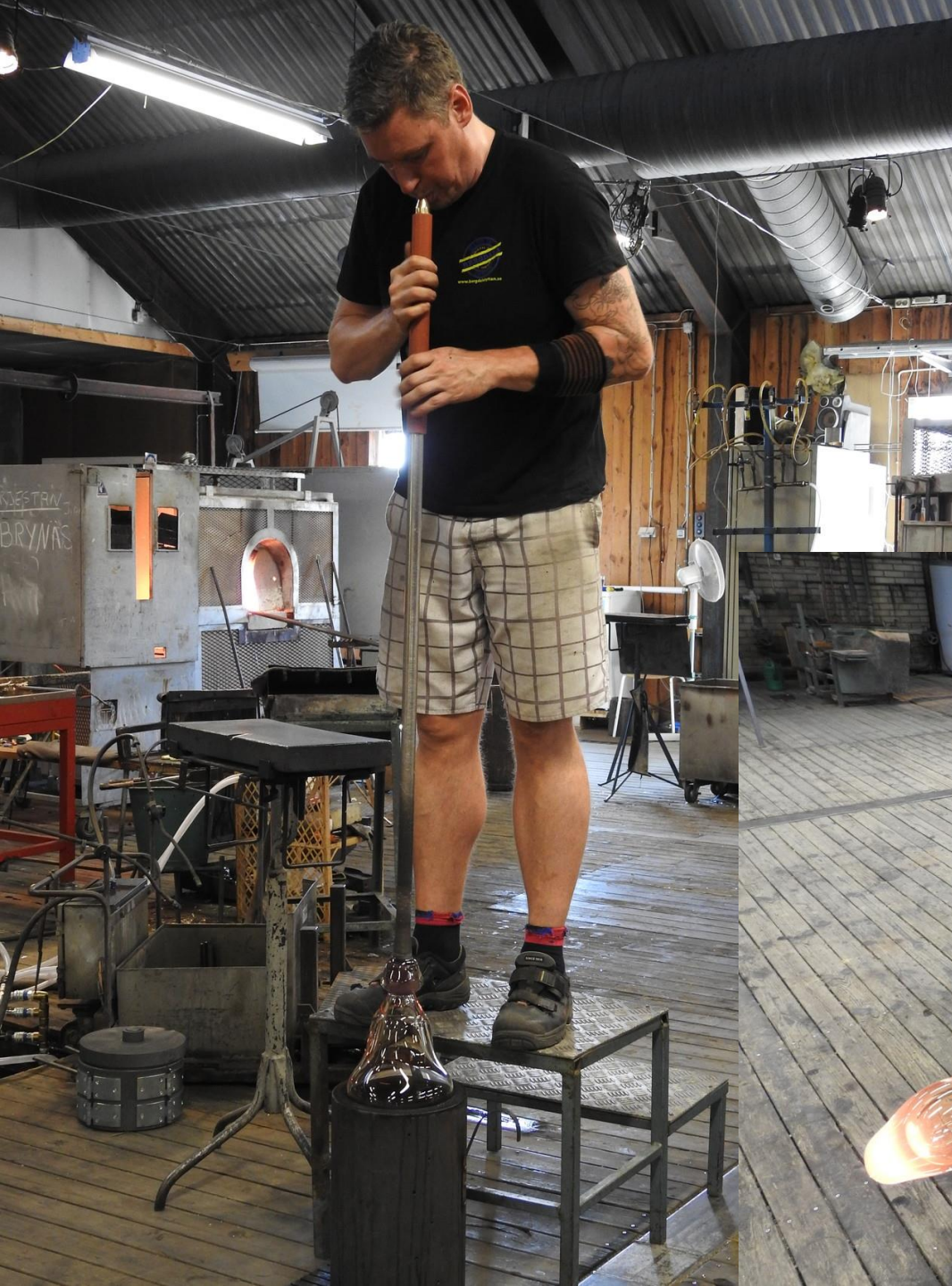
nilssonskonditori 6h

El Stefan serverar våran fina Kumulus Ljuskrona!
[#nilssonskonditori](#)
[#oskarshamn](#)



KUMULUS – Peter Nilsson



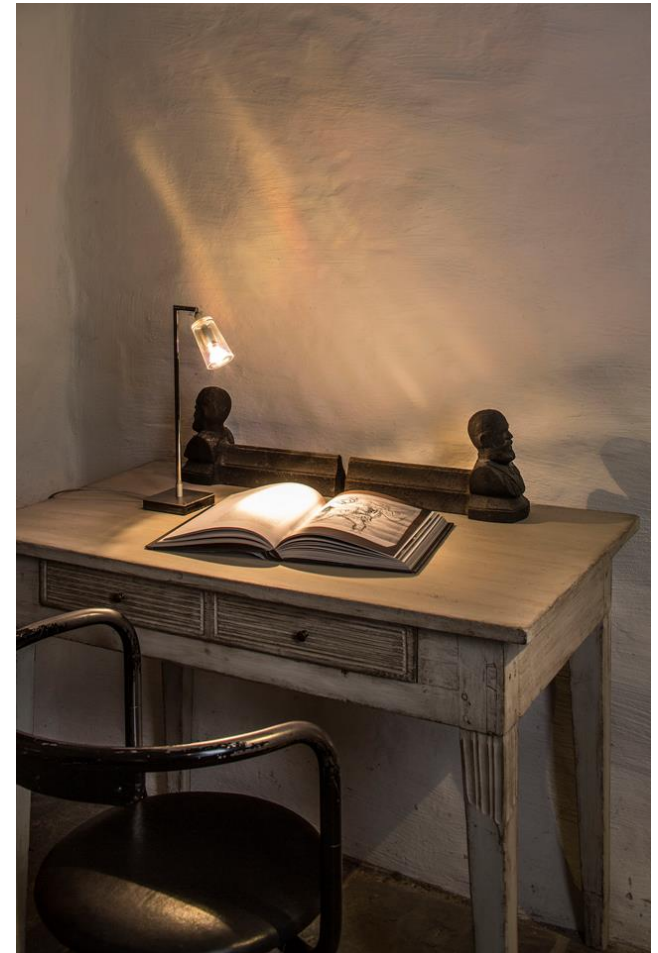




MANHATTAN – Gunnel Svensson



MANHATTAN – Gunnel Svensson



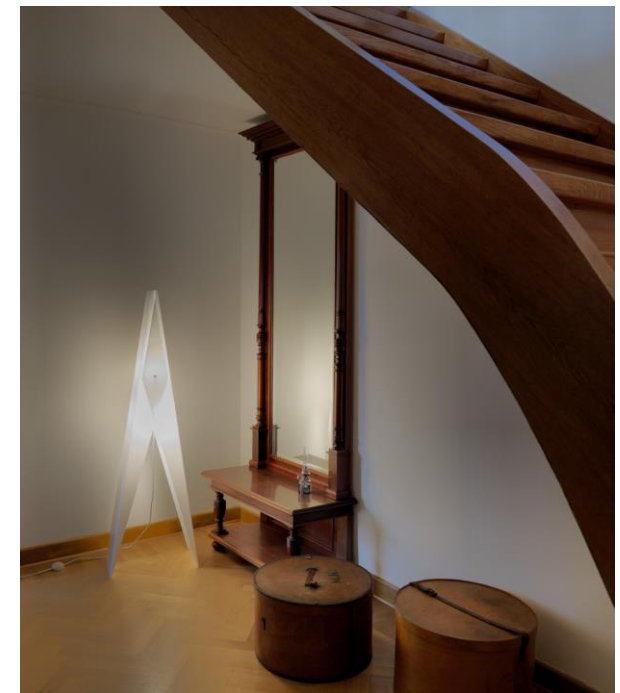
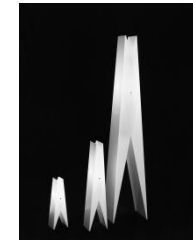
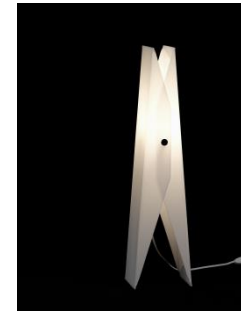
MANHATTAN – Gunnel Svensson



OLLE - Olle Anderson



OLLE - Olle Anderson



PEG - Form for You

Good Design Award 2009 Chicago Atheneum



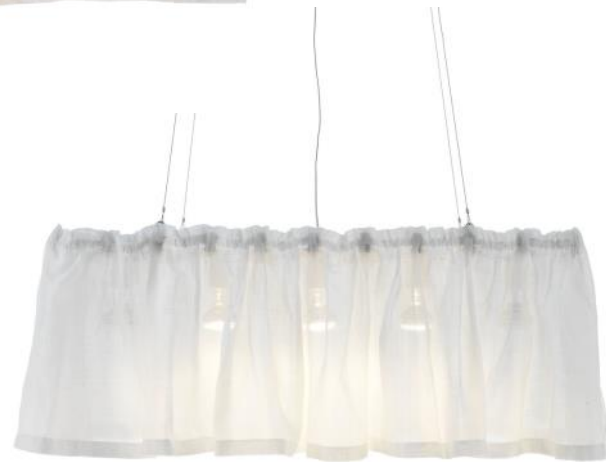
PEG - Form for You



Kotakta oss ang. lagerstatus.



SILUETT Malin Skold



S-XXL - Komplott



SOHO – Gunnel Svensson



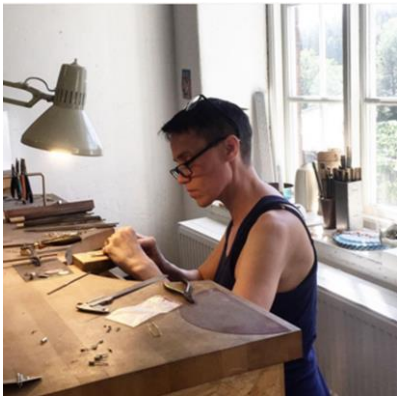
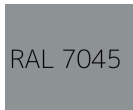
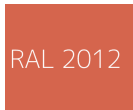
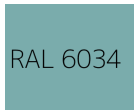
SPLIT - Åsa Lockner & David Taylor



RAL 2012



SPLIT - Åsa Lockner & David Taylor



SPLIT - Åsa Lockner & David Taylor



Colour: NCS3005Y20R

Split 17: 250H / 170D

Split 29: 270H / 290D

Split: 230H / 400D

SPLIT - Åsa Lockner & David Taylor



SPLIT - Åsa Lockner & David Taylor



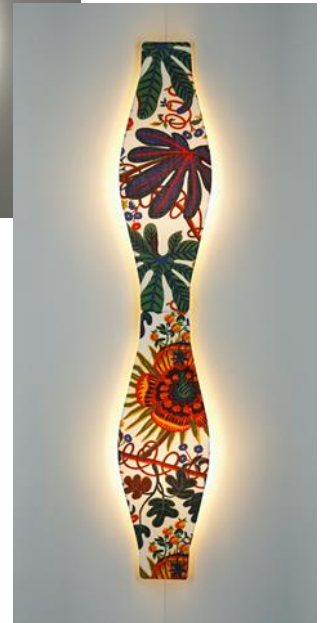
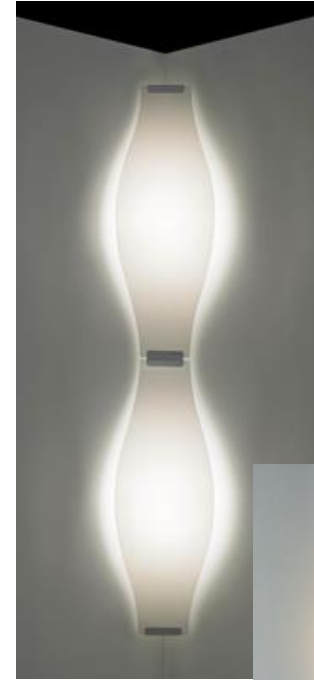
STELLA – Anders Ljungberg & Yvonne Ström



Nisse



STELLA – Anders Ljungberg & Yvonne Ström



STELLA – Anders Ljungberg & Yvonne Ström

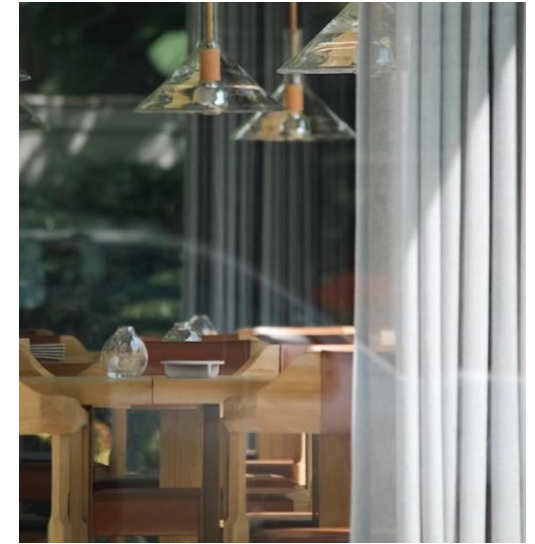


STELLA – Anders Ljungberg & Yvonne Ström



Villa Frantzén Bangkok.
Inredning: Joyn Studio
Stockholm.

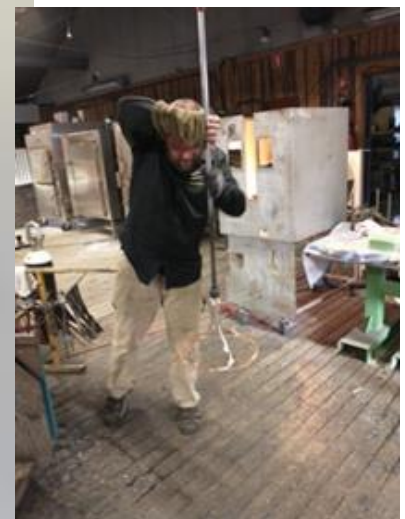
TRATTEN – Anna Berglund



TRATTEN – Anna Berglund



Villa Frantzén Bangkok. Inredning: Joyn Studio Stockholm.

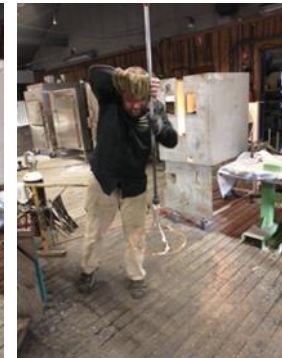


Fribläst hos Bergdalahyttan.



Tratt med kropp - 2015 "Tratten, en skulptural kommunikator och en lysnare. Den samlar upp och tar till vara." av Anna Berglund. Foto: Linus Halgren

TRATTEN – Anna Berglund



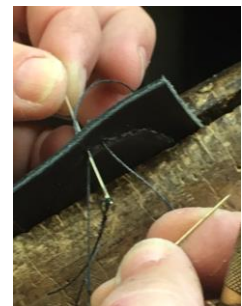
TRATTEN – Anna Berglund



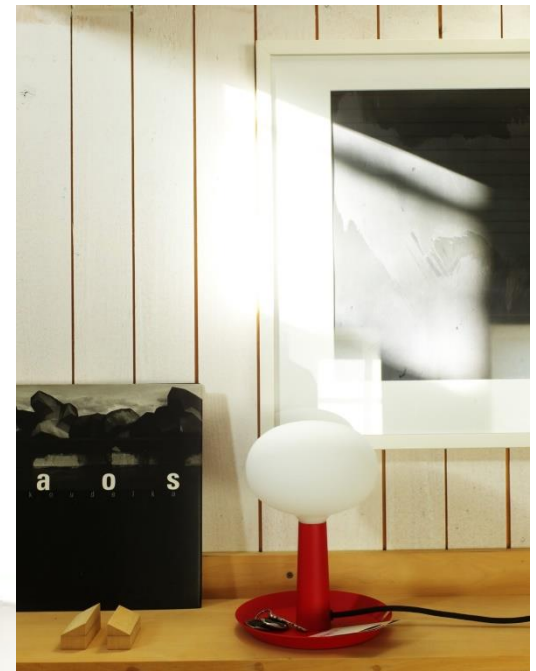
TRATTEN – Anna Berglund



Tratt med krigsp - 2015 "Tratten: en möglig kommunikator och en lysare. Den samlar upp och tar till vara." av Anna Berglund. Foto: Ulrik Hjalgren

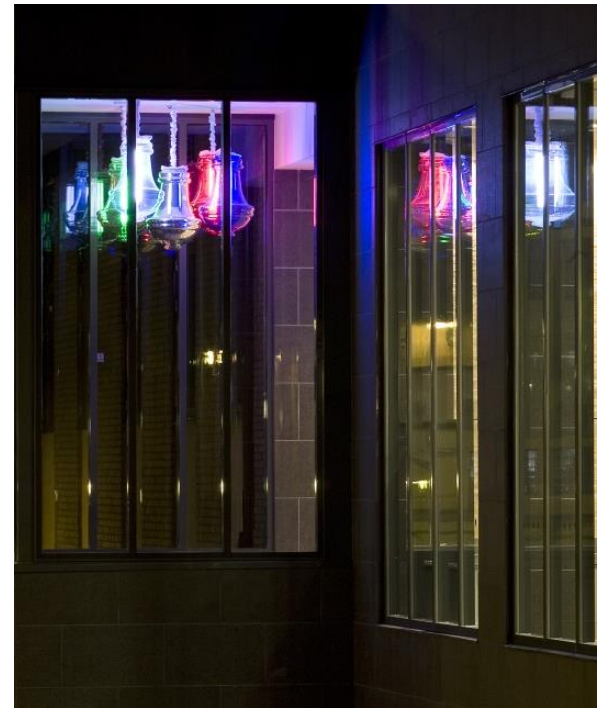
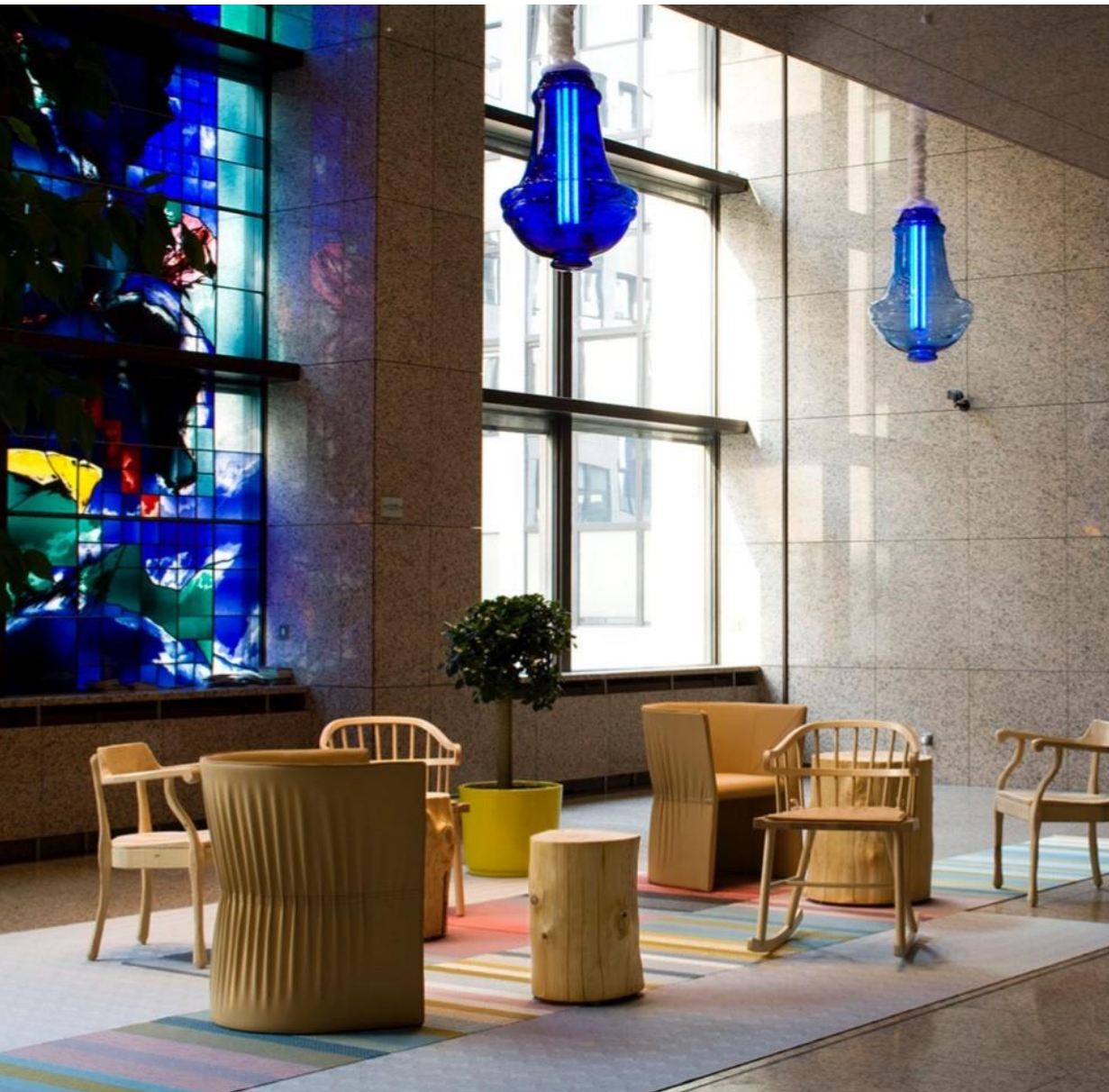


TRATTEN – Anna Berglund



TRAY – Jonas Wagell

Finalist i WAN Lighting Award 2012.



VALBORG – Anna Berglund



VALBORG – Anna Berglund

bsweden

belysningsbolaget

Bsweden Belysningsbolaget AB
Herråkra
364 91 Lenhovda
0474 23040
info@Bsweden.com

Facebook: bsweden belysningsbolaget
Instagram; bsweden_lighting
Hashtag: #bsweden_lighting

Christina Williams
UK, Skottland +44 7796 141288
Christina@Bsweden.com